



# Guide to Recycling in Waushara County

The following items must be recycled:

## PAPER PRODUCTS

**NEWSPAPER** Bundled & tied.  
**MAGAZINES** Glossies are ok.

**OFFICE PAPER** Bagged or bundled.

**CARDBOARD** Flatten cartons or use one large box to hold other cardboard.

All paper products are accepted combined in one collection receptacle.

## CONTAINER MATERIALS

**GLASS** Rinse clean & avoid breaking. Remove caps and rings. Labels can remain. No window glass, ceramics, china, light bulbs, or TV tubes. Put these items in dumpsters.

**TIN CANS** Rinse and remove tops, bottoms, labels, and flatten.

**ALUMINUM CANS** Clean & Flatten

**PLASTIC** Rinse clean, remove rings & caps. Any plastic containers with #1-6 symbols.

All container products are accepted combined in one collection receptacle.



## FOR MORE INFORMATION CONTACT:

Waushara County Parks & Solid Waste Department  
P.O. Box 300  
Wautoma WI 54982  
(920) 787-7037 (Tues-Thur, 9-12)

E-mail: [wcparks@centurytel.net](mailto:wcparks@centurytel.net)

Website:  
[www.co.waushara.wi.us/parks.htm](http://www.co.waushara.wi.us/parks.htm)

If you reside in an area with curbside recycling collection, contact City or Village officials.

Please pitch in to help keep Waushara County beautiful.

# Recycling in Waushara County



Household waste disposal and recycling for Waushara County residents and landowners.

Updated March 2010

### SITE HOURS

Wednesday 12:00—4:00 p.m.  
Saturday 10:00—4:00 p.m.

Sunday 12:00—3:00 p.m. (Summer only)  
Closed Holidays

### SITE LOCATIONS

Aurora	West of STH 49 on Hwy. 21
Coloma	South of Coloma on CTH CH and East on 5th Ave.
Hancock	East of Hancock on CTH V
Plainfield	North of STH 73 on Pine St.
Poy Sippi	West of STH 49 on Bighorn Dr.
Redgranite	North of Redgranite on EE
Saxeville	East of CTH E on Archer Ave
Springwater	North of CTH A on CTH K
Wautoma	North of Wautoma on STH 22 and West on 17th Dr.

### Which site do I use?

Use whichever site is most convenient. Anyone using any site must have a County I.D. card.

A card can be obtained from Waushara Co. Parks & Solid Waste Office, Tues—Thurs, 9-12, (N2402 S. Townline Rd., P.O. Box 300, Wautoma) with proof of residence in the form of a tax bill, rent receipt, or utility bill.



### What Will Sites Accept?

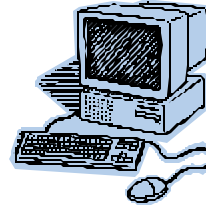
1. Household waste
  2. Leaves, grass clippings, pine needles (must be emptied on compost pile)
  3. Scrap iron and appliances—refrigerator doors must be removed. (No microwaves)
- No Salvaging.
4. Furniture
  5. Tires at a cost of:  
\$3.00 / car tire  
\$5.00 / truck tire  
\$15.00 / tractor tire
  6. Recyclables
  7. Triple rinsed pesticide containers (in garbage dumpster)

### What Sites Will NOT Accept

1. Brush, limbs, stumps
2. Building debris
3. Unrinsed pesticide containers
4. Infectious & hazardous waste
5. Liquids
6. Animal carcasses
7. Computers, microwaves, antifreeze\* (\*These items accepted at Parks office.)

Special Items Accepted at  
Parks & Solid Waste  
Office (920) 787-7037  
during regular office hours:  
Tuesday—Thursday, 9 am-12 pm  
N2402 S. Townline Rd., Wautoma

1. Microwaves—\$10.00 / unit
2. Used Antifreeze—\$1.00 / gallon
3. Computers—\$12.00/monitor—There is no charge for computer accessories or hard drives.



### These items must, by law, be recycled

**MOTOR OIL** Put in clean plastic jugs with lid. Pour into collection drum—jugs are not recycled.

**VEHICLE BATTERIES** Handle carefully. Acid is dangerous.

**MAJOR APPLIANCES** Refrigerator doors must be removed.

No microwaves accepted at site. Take to County Parks office.